

18v Cordless 20"
POWERhedge Trimmer

User Manual

HT2
POWERhandle

CELTM

THANK YOU

Thank you for investing in a CEL product. The 18v Cordless POWERhedge Trimmer has been engineered and made to demanding high quality standards; ease of operation and safety have taken a major role in development. Proper care of your product will give you years of trouble-free use.

Normal wear and tear, including accessory wear, is not covered under guarantee. The product is guaranteed for **domestic use** against manufacturing faults for a period of 12 months (for additional guarantee period (if any) please refer to the store or agent from which you purchased the product or contact the nearest authorized dealer). This product is not guaranteed for HIRE purposes.

If you have any questions, please contact us at:

service@cel-global.com

It is possible to download updated user manuals, view demonstration videos and find information about new products at: **www.cel-global.com**

Warning: User must read and understand the user manual before using the product to reduce the risk of injury. Failure to follow all instructions may result in electric shock, fire and/or serious personal injury. The product must be used only for its prescribed purpose. Any use other than those mentioned in this manual will be considered a case of misuse. The manufacturer shall NOT be liable for any damage or injury resulting from such cases of misuse, use of force, partially or completely dismantled appliances.



Contents

- 1.0 Important Safety Notes
- 2.0 Unpacking and Description of Features

GETTING STARTED

- 3.0 Safety Notes
- 4.0 Fitting a POWERhandle and Operation
- 5.0 Cutting Advice

CUTTING

- 6.0 Maintenance, Storage, Environment
- 7.0 FAQ
- 8.0 Technical Drawings
- 8.0 Technical Specifications

CARE

Description of symbols

The rating plate on your tool may show symbols. These represent important information about the product or instructions on its use.



General
Hazard



Read
Instructions



Keep Dry



Protect
Eyes, Ears,
Lungs



Keep
Bystanders
Away



Flying
Debris



Sharp
Blades



Wear
Appropriate
Clothing

Breathing protection should be worn when cutting some plants.

Use at a distance of at least 5m from other people.

Conforms to relevant standards for electromagnetic compatibility.

Safety instructions

To use this tool properly, you must observe the safety limitations, the assembly instructions and the operating instructions to be found in this Manual. All persons who use and service this machine must be acquainted with this Manual and must be informed about its potential hazards. Children and infirm people must not use this tool. Children should be supervised at all times if they are in the area in which the tool is being used. It is also imperative that you observe the accident prevention regulations in force in your area. The same applies for general rules of occupational health and safety.

The manufacturer shall not be liable for any changes made to the tool nor for any damage resulting from such changes.

Even when the tool is used as prescribed it is not possible to eliminate all residual risk factors. The following hazards may arise in connection with the tool's construction and design:

Contact with the blade.

Kickback.

Blade fracture.

Catapulting of blade pieces.

Damage to eyes if effective safety glasses or shield are not worn.

Damage to ears if effective ear defenders are not worn.

Injury or illness caused by inhalation of cuttings if breathing protection is not sufficient.

Always remove the battery from the tool before making any adjustments or performing maintenance.

Store tools safely. When not in use, tools should be stored in a dry, high place or locked up out of reach.

Do not force the tool. The tool will do the job better and safer working at the rate for which it was designed.

Use the correct tool for the job. Do not force small tools or attachments to do the job best handled by a heavier duty tool. Never use a tool for a purpose other than that for which it was intended.

Dress correctly. Do not wear loose clothing or jewellery. They can be caught in moving parts. Rubber gloves and non-slip footwear are recommended while working outdoors. If you have long hair, wear a protective hair covering.

Use safety accessories. Safety glasses and ear protection should always be worn.

Do not overreach. Keep your footing secure and balanced at all times.

Look after your tools. Keep tools clean and sharp for better and safer performance. Follow the instructions regarding lubrication and accessory changes. Keep tool handles dry, clean and free from oil and grease.

Disable idle tools. Remove the battery from the tool before servicing and when the tool is not in use.

Avoid unintentional starting. Make sure that the switches are in the OFF position before attaching the battery.

Stay alert Watch what you are doing, use common sense. Do not operate a power tool when you are tired.

Check for damaged parts. Before using a tool, check that there are no damaged parts. If a part is slightly damaged, carefully determine it will operate properly and perform its intended function. Check for alignment of moving parts, binding of moving parts, breakage of parts, proper mounting and any other conditions that may affect the operation of the tool. A guard or other part that is damaged should be properly repaired or replaced by an authorized service facility, unless otherwise indicated in this Instruction Manual.

Defective switches must be replaced by an authorised service facility. Do not use a tool if the switch does not turn the tool on and off correctly.

Guard against electric shock. Prevent contact with grounded objects such as water pipes.

Use only approved parts. When servicing, use only identical replacement parts. Use an authorised service facility to fit replacement parts.

Do not let tool run unattended. Always wait until your power tool has come to a complete stop and remove the battery before leaving it.

WARNING. The use of an accessory or attachment, other than those recommended in this Instruction Manual, may present a risk of personal injury.

The tool must be used only for its prescribed purpose. Any use other than those mentioned in this Manual will be considered a case of misuse. The user and not the manufacturer shall be liable for any damage or injury resulting from such cases at misuse.

Additional safety rules for hedge trimmers

Do not use the trimmer in the rain or in a damp area.

Keep hands and fingers well away from the cutting area.

Wear work gloves, eye, ear and breathing protection, solid shoes and trousers while using this trimmer.

Always grasp both handles when operating the unit.

Remove the battery when you have finished cutting, before cleaning or if you have been interrupted.

This trimmer has been designed to cut soft, new growth and should not be used on branches, hard wood or other forms of cutting.

Do not attempt to free a jammed blade before first switching off the machine and removing the battery.

If you are interrupted while operating the trimmer, complete the process and switch off before looking up.

Never allow untrained users or children to use the trimmer.

Wear goggles
Wear ear muffs
Wear breathing protection
Wear work boots
Wear protective clothing



5 POWERhandle

- 1 HT2 POWERhedge Trimmer
- 2 Blade Sheath
- 3 This user manual
- 4 Safety guard
- 5 Requires POWERhandle
(sold separately depending on retail package)

Before using the trimmer, familiarise yourself with all the operating features and safety requirements. **Only use the trimmer as intended.**

The content and appearance of your product may vary from the images and descriptions in this manual.

NOTE, due to modern mass production techniques, it is unlikely that your power tool is faulty or that a part is missing. If you find anything wrong, do not operate the tool until the parts have been replaced or the fault has been rectified. Failure to do so could result in serious personal Injury.



Always check for danger to people, animals, and yourself before activating trimmer. Beware of hidden objects in, around and behind the hedge.

Always wear safety equipment.

Eye, ear and breathing protection, suitable clothing and work boots



Do not let the blade come into contact with fencing wire or any other object that could damage it.



The blade teeth have extended points with rounded ends to reduce the chance of injury in case of accidental contact.

This trimmer is to be used for trimming soft, new growth only. Use the tool and accessories only for the applications intended. All other applications are expressly ruled out

The rear handle trigger switch and front handle bar switch must be operated together to start the motor. This ensures that both hands are used to control the trimmer and so can not come into contact with moving blades.

If either of the two switches is released the tool is designed to stop rapidly.



The rounded teeth have a raised profile to prevent objects greater than 14mm (9/16") from entering the cutting area. The trimmer may still be overloaded if several large branches enter the cutting area at the same time.



DANGER, these blades are sharp! The cutting action can cause serious injury if not used with care.



General
Hazard



Read
Instructions



Keep Dry



Protect
Eyes, Ears,
Lungs



Keep
Bystanders
Away



Flying
Debris



Sharp
Blades

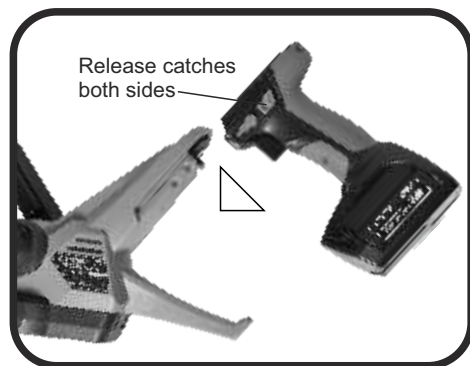


Wear
Appropriate
Clothing

Fitting and removing a POWERhandle

Hold the trimmer firmly, align the slots on the POWERhandle with the rails on the trimmer and slide on. When the POWERhandle is locked in place there will be a firm click. Check the handle is secure before starting work.

To remove, slide the release catches on both sides of the POWERhandle and firmly pull away from the trimmer.



Before starting your hedge trimmer remove the blade sheath.



Switching on and off

1. To switch on, press both the trigger and 3-way-switch at the same time.
2. To switch off, release either switch.



Shaping

Trim a hedge so that it is wider at the bottom than the top. This improves light penetration and promotes healthy growth. Narrow the hedge approximately 100mm for every 1m in height. A bush can be round or column shaped.

Only cut new growth in the summer, reshape the hedge in winter.

Be aware of bird nesting times. Some countries have legislation regarding hedge cutting.



Assume a secure position, check for danger to yourself or others, use two hands to hold the trimmer and switch on.

For a straight hedge use a line to guide the depth of your cut. Be sure to keep this line away from the cutting blades as it may damage the mechanism.

Trim both sides of the hedge, starting at the bottom. This prevents cuttings falling into the area yet to be cut and allows a smoother action by following the natural direction of growth.

Pass the blade lightly through the surface of the hedge. Do not attempt to cut too deep.

Trim the top of the hedge from a secure position and without leaning into the hedge. Be aware of people, animals and objects on the other side of the hedge.

For neglected hedges that require cutting back substantially, use pruning shears to cut thicker branches and then finish the job with the hedge trimmer.

For more tips, techniques and tools please visit www.cel-global.com

NOTE If you notice some flashing in the ventilation slots, this is not a cause for alarm, It is normal and does not affect the operation of the trimmer.

There is also a slight burning smell, This comes from the electric brake and is not a cause for alarm either. The brake stops the tool when the trigger is released.

WARNING, Switch off and remove the battery before carrying out any maintenance on the tool.

Lubrication

After each: use, carefully clean the blades with a brush and lightly lubricate with general purpose oil or spray lubricant. Ask your dealer for suitable products.

General inspection

Regularly check that all the fixing screws are present and tight. They may vibrate loose over time.

Keep the tool's air vents unclogged and clean at all times.

Remove dust and dirt regularly.

Cleaning is best done with compressed air or a rag.

Never use caustic agents to clean plastic parts.

CAUTION, Do not use cleaning agents to clean the plastic parts of the tool. A mild detergent on a damp cloth is recommended. Water must never come into contact with the tool.

Environment

When the time comes to dispose of this product please consider the environment and take it to a recognised recycling facility instead of disposing with general household waste.

The trimmer uses a battery which must be disposed of properly.

Call your local council, civic amenity site, or recycling centre for information on the recycling and disposal of electrical products and batteries.

Storage

Store the tool, instruction manual and accessories in a secure, dry place. In this way you will always have all the information and parts ready to hand.

Never Store the Trimmer With a Flat Battery.

The battery should ideally be stored between 10°C and 24°C (50°F) and (75°F).

What size of a hedge stem will the unit cut?

The HT2 Hedge Trimmer was designed to cut up to 10mm thickness, larger branches (up to 14mm) can also be cut but this will increase load on the unit and so decrease performance and battery life.

The blades are not cutting cleanly, are they dull?

Most likely there is a sap build-up between the blades. Spray a light coating of machine oil on the blades to loosen the sap. Regular lubrication will help to avoid this buildup.

The trimmer wont start, what's wrong?

a)Check the battery is charged and properly fitted, also make sure the triggers are working correctly and both are being squeezed at the same time. b)Remove the battery and check that the blade is not jammed, check for debris, sap or rust build up and lubricate or clean accordingly. c)Lithium Ion batteries have a protection circuit to prevent them from completely discharging. The battery will provide constant power then stop rather than slowing down. Recharge fully.

Why does my trimmer stop sometimes?

See c) above.

What type of oil should I use to lubricate hedge trimmer blades?

Just about any type of oil will work on the blades, a common spray oil works perfectly.

Do I need to fully discharge the battery before recharging it?

No the Li-Ion system has no memory effect so you can charge it at any time. The charge will be retained in storage for much longer than older battery technology.

Where should I keep my Hedge Trimmer ?

In a dry place at a stable temperature between 10°C and 24°C (50°F and 75°F).

What should I do if my Hedge Trimmer gets wet?

Dry fully for several days in a warm but not hot place before trying to charge or use.

How can I get my Hedge Trimmer repaired if it is damaged?

Contact your retailer.

Where do I find my serial number?

On the left hand side of the body.

Where can I get replacement parts, advice or help?

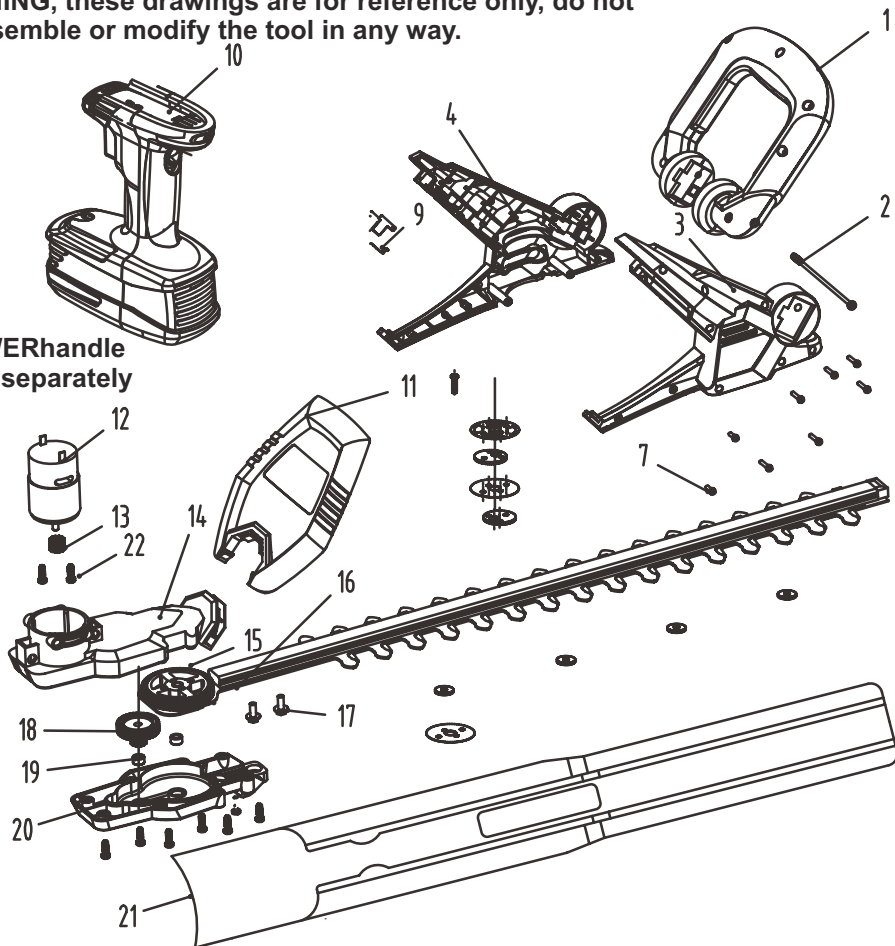
Ask at your retailer or visit www.cel-global.com

How long is the warranty and what is covered?

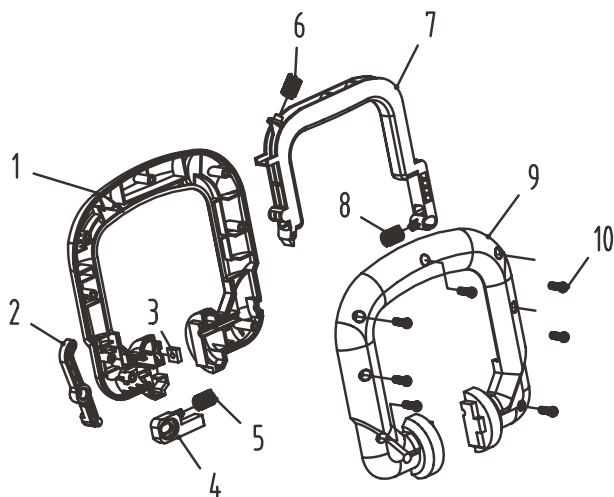
Please see inside cover

WARNING, these drawings are for reference only, do not disassemble or modify the tool in any way.

POWERhandle
sold separately

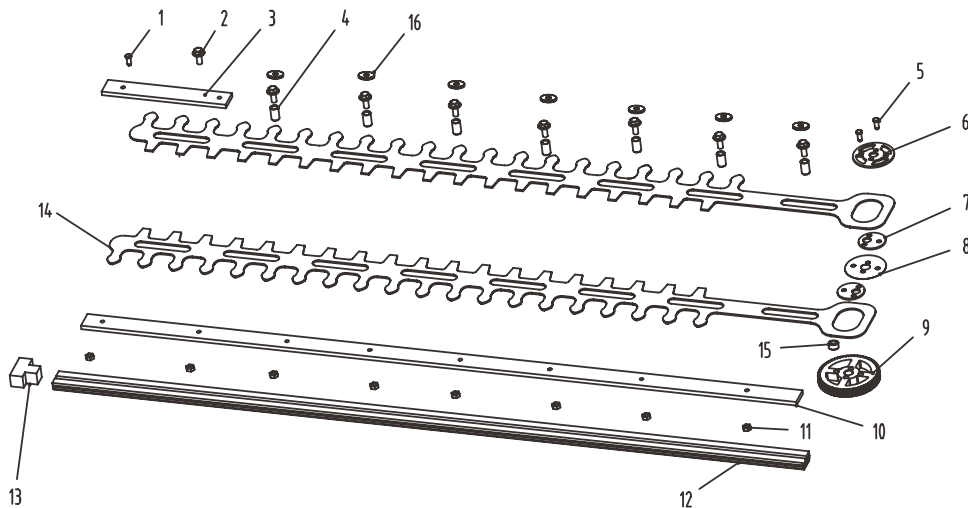


ITEM	Part No.	NAME	QTY	MATERIAL
22	324003003	SCREW M4x10	2	GB/T 9074.9
21	311002013	BLADE_AXIS	1	PE
20	311002012	GEARBOX_LOWER	1	PA6+GF30
19	321002012	GEARBOX_BEARING	2	Q235
18	321002011	GEARS	1	FE-CU
17	324002005	SCREW M5x20	2	GB/T9456 F
16	220002001	BLADE ASSY	1	
15	321002009	WASHER	2	65Mn
14	311002011	GEARBOX_UPPER	1	PA6+GF30
13	321002008	MOTOR GEAR	1	FE-CU
12	331001002	18V LSHI MOTOR	1	775pc-73138-18V
11	311002010	HT2_PROTECTING_PLATED	1	PP
10	133002001/133002002	PH03 NI-CD	1	18V
9	324002002	HT2_COCONTACT_SUPPORT	8	ABS
8	311002009	HT2_COCONTACT_PLATE	1	ABS
7	211002001	SCREW M3X10	1	PA6+GF30
6	311002008	SCREW M3X12	1	ABS
5	321002015	HT2_SWITCH_SPRING	1	SPRING STEEL
4	311002007	HT2_HOUSING_L	1	ABS
3	333001003	HT2_HOUSING_R	1	ABS
2	324002006	SCREWM4X105	1	
1	210002001	HT2_HANDLE_ASSY	1	



WARNING, these drawings are for reference only, do not disassemble or modify the tool in any way.

ITEM	Part No.	NAME	QTY	MATERIAL
10	324002002	SCREW ST4.2X14	7	GB/T 13806.2-1992 A
9	311002005	HANDLE_LOWER	1	PA6+GF30
8	321002014	SPRING1	1	SPRING STEEL
7	311002004	SWITCH_2	1	ABS
6	321002014	BUTTON_SPRING	1	SPRING STEEL
5	321002015	SPRING1	1	SPRING STEEL
4	311002003	SLIDING	1	PA6+GF30
3	324002001	NUT M4	1	
2	311002002	GEMEL_POLE	1	PA6+GF30
1	311002001	HANDLE_UPPER	1	PA6+GF30



WARNING, these drawings are for reference only, do not disassemble or modify the tool in any way.

ITEM	Part No.	NAME	QTY	MATERIAL
14	321002006	BLADE	2	65Mn
13	311002006	BLADE_LOCK	1	PP
12	321002010	BLADE_SOLT	1	AL-ALLOY
11	324002007	PA-NUT M5	5	
10	321002005	BLADE_PROTECING	1	65Mn
9	321002002	LARGER_GEAR	1	FE-CU
8	321002004	METAL_PLATED	1	65Mn
7	321002003	ECCENTRIC_PLATED	2	65Mn
6	321002013	PRESS_UPPER	1	65Mn
5	324002008	RIVET 4X14	2	
4	321002001	BLADE_SUPPORT	2	FE-CU
3	321002016	BLADE_FIXED	1	45STEEL
2	324002004	NUT M5*10	5	
1	324002003	SCREW ST3X10	1	GB/T 13806.2-1992 A#

Technical Specifications

9.0

Blade Length and Hardness	- 510mm (20") 48HRC
Unit operating time with 1.3Ah POWERhandle	- 30 minutes with no load
Blade Oscillating Speed	- 1200rpm with no load
Sound Pressure Level (dB(A))	- 86dB
Battery operating voltage	- 18V DC
Boxed dimensions	- 945x205x215mm
	- approx (37x8x8")
Weight without battery	- 1.85Kg (4.1lbs)
Product Code	- HT2

Made in China
Designed in UK

If you experience any problems with the product please contact

email: service@cel-global.com

phone: UK +44 (0) 8453 889769

www.cel-global.com



**GENERAL HAZARD
SAFETY ALERT**



**BEWARE OF FLYING
OBJECTS AND DEBRIS**



READ INSTRUCTION MANUAL



KEEP BYSTANDERS AWAY

CEL
C Enterprise Ltd

C Enterprise Limited www.cel-global.com info@cel-global.com

UK • HK • USA • China • Europe • Australia • Japan