

WORKVAC
User Manual

WV1

CEL

THANK YOU

Thank you for investing in a CEL product. The workVAC has been engineered and made to demanding high quality standards; ease of operation and safety have taken a major role in development. Proper care of your product will give you years of trouble-free use.

Normal wear and tear, including accessory wear, is not covered under guarantee. The product is guaranteed for **domestic use** against manufacturing faults for a period of 24 months (for additional guarantee period (if any) please refer to the store or agent from which you purchased the product or contact the nearest authorized dealer). This product is not guaranteed for HIRE purposes.

If you have any questions, please contact us:

phone UK: +44 8453 88 97 69

phone US: +1 800 233 7592

service@cel-global.com

It is possible to download updated user manuals, view demonstration videos and find information about new products at: **www.cel-global.com**

Warning: User must read and understand all relevant documents and warnings before using the product to reduce the risk of injury. Failure to follow all instructions may result in electric shock, fire and/or serious personal injury. The product must be used only for its prescribed purpose. Any use other than those mentioned in this manual will be considered a case of misuse. The manufacturer shall NOT be liable for any damage or injury resulting from such cases of misuse, use of force, partially or completely dismantled appliances.



Contents

Before using the blower familiarise yourself and all other users with all the operating features and safety requirements. Description and operating instructions for other tools/accessories are included with those products. **Only use the workVAC as intended. ie. Clearing dry/damp areas and lightweight debris from hard surfaces.**

- 1.0 Important Safety Notes
- 2.0 Description of Features
- 3.0 Assembly and Safety Checks

UNPACKING

- 4.0 Getting Started
- 5.0 Cleaning the Filter
- 6.0 Picking Up Liquids
- 7.0 AUTO Start Function

OPERATION

- 8.0 Maintenance, Environment and Storage
- 9.0 Technical Specifications

CARE

workVAC



WARNING!

Rating Label: The voltage shown on the rating label on your workVAC must match your local power supply. If not or if you have any doubt you must contact your reseller for advice before plugging the unit into any power source.

Description of symbols

The rating plate and labels on your product may show symbols. These represent important information about the product or instructions on its use.



General
Hazard



Read
Instructions



Risk of
Shock



Protect
Eyes, Ears,
Lungs



Keep
Bystanders
Away



Flying
Debris



Keep Dry



Wear
Appropriate
Clothing



WARNING Read all safety warnings and all instructions.

Failure to follow the warnings and instructions may result in electric shock, fire and/or serious injury.

Save all warnings and instructions for future reference.

The terms "tool", "machine" or "power tool" in the warnings refers to mains-operated (corded) and battery-operated (cordless) power tools, their accessories, electrical machinery and power supplies.

Work area safety

- a) Keep work area clean and well lit. Cluttered or dark areas invite accidents.
- b) Do not operate power tools in explosive atmospheres, such as in the presence of flammable liquids, gases or dust. Power tools and their accessories create sparks which may ignite the dust or fumes.
- c) Keep children and bystanders away while operating a power tool. Distractions can cause you to lose control.

Electrical safety

- a) Power tool plugs must match the outlet. Never modify the plug in any way. Check the voltage on the rating label of the tool matches the voltage of the mains output before plugging in. Do not use any adapter plugs or converters with earthed (grounded) power tools. Unmodified plugs and matching outlets will reduce risk of electric shock.
- b) Avoid body contact with grounded surfaces such as pipes, radiators, ranges and refrigerators. There is an increased risk of electric shock if your body is grounded.
- c) Don't expose power tools to rain or wet conditions. Water entering a power tool will increase the risk of electric shock.
- d) Do not abuse the cord. Never use the cord to carry the tools or pull the plug from an outlet. Keep cord away from heat, oil, corrosives, sharp edges or moving parts. Replace damaged cords immediately. Damaged cords increase the risk of electric shock.
- e) When operating a power tool outdoors, use an extension cord suitable for outdoor use. Use of cord suitable for outdoor use reduces the risk of electric shock.

Personal safety

- a) Stay alert, watch what you are doing, and use common sense when operating a power tool. Do not use tool while tired or under the influence of drugs, alcohol, or medication. A moment of inattention while operating power tools may result in serious personal injury.
- b) Use safety equipment. Always wear eye protection. Safety equipment such as dust mask, non-skid safety shoes, hard hat, and hearing protection must be used for appropriate conditions and will reduce personal injuries.
- c) Avoid accidental starting. Ensure switches are in the off-position before plugging in. Carrying tools with your finger on the switch or plugging in power tools that have the switch on invites accidents.
- d) Remove adjusting key or wrench before turning the tool on. A wrench or a key left attached to a moving part of the tool may result in personal injury.
- e) Do not overreach. Keep proper footing and balance at all times. This enables better control of the power tool in unexpected situations.
- f) Dress appropriately. Do not wear loose clothing or jewellery. Keep your hair, clothing and gloves away from moving parts. Loose clothes, jewellery or long hair can be caught in moving parts.
- g) If devices are provided for the connection of dust extraction and collection facilities, ensure these are connected and properly used. Use of these devices can reduce dust-related hazards.

Tool use and care

- a) Do not force or overload the tool. Use the correct power tool for your application. The correct tool will do the job better and safer at the rate for which it was designed.
- b) Do not use the tool if the switch does not turn it on and off. Any tool that cannot be controlled with the switch is dangerous and must be repaired.
- c) Disconnect the plug from the power source and/or the battery pack from the tool before making any adjustments, changing accessories, or storing power tools. Such preventive safety measures reduce the risk of starting the tool accidentally.
- d) Store idle tools out of the reach of children and do not allow persons unfamiliar with the tool or these instructions to operate the power tool. Tools are dangerous in the hands of untrained users.
- e) Maintain tools. Check for misalignment or binding of moving parts, breakage of parts and any other condition that may affect the tool's operation. If damaged, have the tool repaired before use. Many accidents are caused by poorly maintained tools.
- f) Keep cutting tools sharp and clean. Properly maintained cutting tools with sharp cutting edges are less likely to bind and are easier to control.
- g) Use the tool, accessories and tool bits etc. in accordance with their instructions and warning labels, taking into account the working conditions and the work to be performed. Use of the tool for operations different from those intended could result in a hazardous situation.

Service

Have your power tool serviced by a qualified repair person using only identical replacement parts. This will ensure that the safety of the tool is maintained.

NOTE

- ~ Always unwind all cables completely, including extension leads and especially extension drum reels.
- ~ Always check the tool and all cables and connections are undamaged, clean and dry before plugging in.
- ~ Always use an RCD or suitable circuit breaker when using electrical tools.
- ~ Penetration of water into the machine increases the risk of an electric shock.
- ~ Use suitable detectors to determine if utility lines are hidden in the work area or call the local utility company for assistance. Contact with electric lines can lead to fire and electric shock. Damaging a gas line can lead to explosion. Penetrating a water line causes property damage or may cause an electric shock.
- ~ Secure the workpiece. A workpiece clamped with clamping devices or in a vice is held more securely than by hand.
- ~ Keep your workplace clean. Blends of materials are particularly dangerous. Dust from light alloys can burn or explode.
- ~ Wear protective gloves when changing application tools/accessories. Application tools/accessories become hot after prolonged usage.
- ~ Do not treat the surface to be worked with solvent-containing fluids. Materials being warmed up by the friction can cause toxic vapours to develop.
- ~ Never work in an area you cannot clearly see. Hidden objects can cause harm or be damaged.

Key risks with Vacuum Cleaners/Blowers:

Even when disconnected from mains this product can give a powerful electric shock. Only qualified and approved engineers may open the housing. Disconnect from mains power before removing tools and attachments or cleaning the tool. Never touch any electrical contacts.

Dust and collected materials can be harmful, use appropriate safety equipment when opening and emptying the waste bin. Appropriate clothing, face mask and eye protection must be worn and provided for any user of this tool.

Mixtures of materials collected in the waste bin can cause dangerous conditions, empty and clean the bin before collecting a different substance. Be aware of the risks of mixing the materials you work with.

Blowing can cause injury or damage, particularly to eyes. Always wear appropriate safety gear when using the blow function and never direct the airflow or spray at a person or animal, never blow flammable materials near a source of ignition.

Keep the filter in good condition, clean and in place at all times when using the workVAC. Operating the workVAC without this filter will damage components and void the warranty.

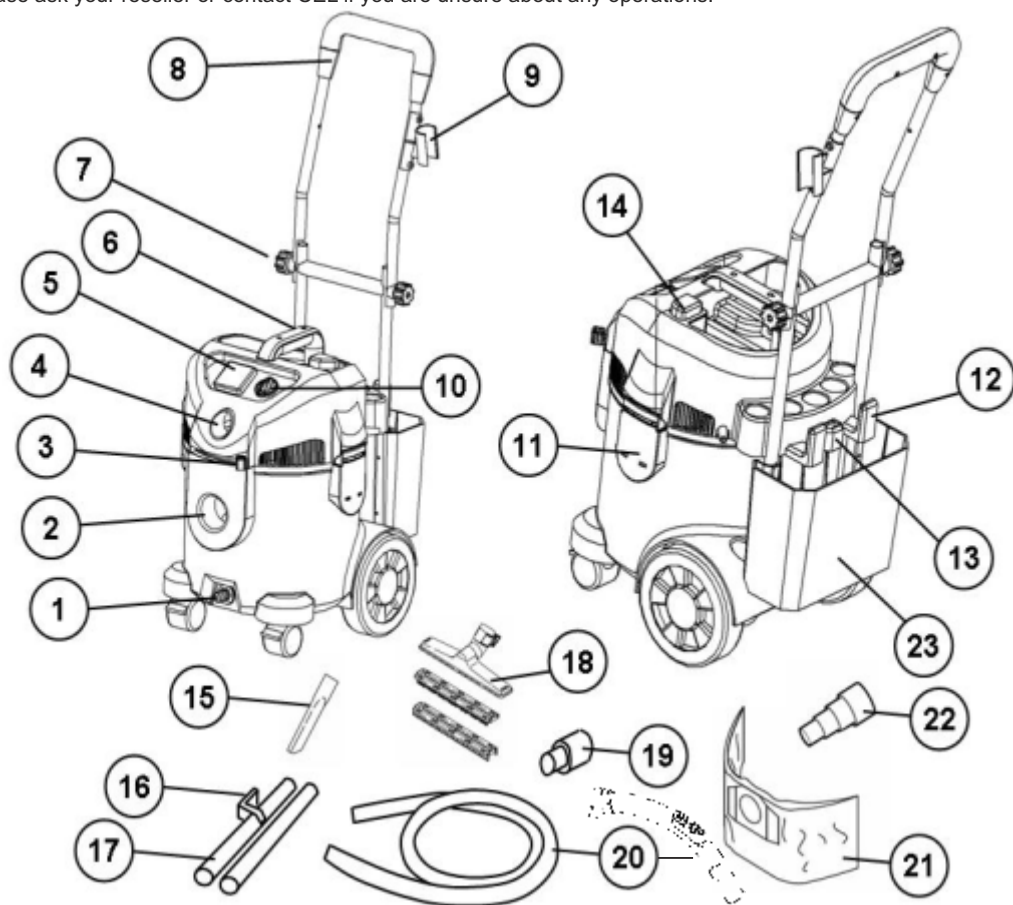


**Always wear equipment to protect vision, hearing and lungs and suitable clothing and footwear.
Long periods of use can be harmful, take regular breaks.**

This product is sold in several configurations.

Your product may differ from images and descriptions in this user manual.

Please ask your reseller or contact CEL if you are unsure about any operations.

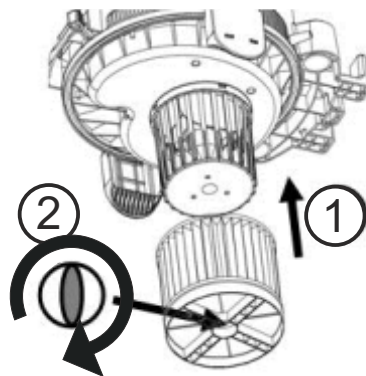


1. Drainage nipple
2. Vacuum Suction inlet
3. Vacuum or Blow Switch
4. Blow outlet
5. Socket for power tool
6. Carry handle
7. Trolley screws (optional)
8. Trolley handle (optional)
9. Parking function for tube (optional)
10. POWER ON/OFF switch
11. Buckles
12. Hook for cable storage
13. Parking holder for tube on non-trolley versions
14. Filter Cleaning button
15. Crevice tool with brush
16. Parking clip for tube
17. Tubes
18. Floor nozzle (wet and dry pick up)
19. Blow adapter
20. Hose and Handle
21. Paper bag (optional) WV1-BG1
22. Power tool adapter (optional)
23. Storage box (optional)

Before starting the workVAC ensure all packaging materials are removed and all parts secured.

Check that the filter is in place and secured.

WARNING! Never run the workVAC without a correctly fitted filter that is in good condition and properly secured in place. To do so may cause damage to the motor, fans and other components. This would void your warranty. Replacement filters can be ordered through your supplier or directly from CEL using the part number WV1-HF1.



Fit the motor unit onto the waste bin. Ensure the blow outlet is aligned above the suction inlet and that the motor unit is seated evenly all the way around the bin. Move the motor unit from side to side to ensure a good fit before gently engaging the two buckles by pressing them against the waste bin. If they do not click into place easily check for proper alignment and ensure no debris is trapped in the rim or under the buckles. Do not force the buckles to lock.

Check that the voltage on the rating plate is the same as your supply, the plug is the correct type for your outlet and that the cable and switches are in good condition and operate properly.



Before using the vacuum cleaner always read the operating instructions and provide them to other users. **The following materials should not be picked up by the vacuum cleaner: hazardous dust, hot materials (burning cigarettes, hot ash, etc.), flammable, explosive, aggressive liquids, flammable, explosive dust. When working with harmful substances, always be aware of risks and take appropriate measures before beginning work.**

This device is not intended for use by persons (including children) with reduced physical, sensory or mental abilities or lacking experience and/or knowledge. Children should be supervised, to ensure that they do not play with the device.

Never touch the mains plug, switches and the socket with wet hands.

Ensure that the voltage shown on the rating plate corresponds to the voltage of the local mains power supply. It is recommended that the vacuum cleaner should be connected via a residual current circuit breaker.

Before starting and regularly inspect power cord to detect signs of damage, e.g. cracks or ageing. If the power cord is damaged, it must be replaced to avoid danger before use of the vacuum cleaner is continued. Repairs should only be carried out by qualified and authorised persons, if in doubt ask your retailer.

Run the product briefly and check for unusual sound or vibration, and for any other signs of damage or deterioration.

Never use the vacuum cleaner if the filter is damaged, incorrectly fitted or absent.

Switch the appliance off after every use and prior to every cleaning/maintenance procedure.

Do not pull the plug from the socket by pulling on the connecting cable.

Protect the unit from rain, moisture and damp. Do not store outside or in conditions that could harm electronic, structural or operational function.

Use the vacuum cleaner only with original filter bag, original spare parts, accessories and special accessories.

The manufacturer is not responsible for any damages that may occur on account of improper use or wrong operation.

Never direct the airflow toward a person or animal. If you feel any physical discomfort or pain stop work immediately. Make sure bystanders are safe, do not blow if you cannot see the area being effected.

Always disconnect the power and ensure the motor has stopped before cleaning or making any adjustments.



Setting Vacuum function

For regular vacuum function choose the Vacuum option by sliding the lever above the Suction Inlet all the way to the left side.

Connect hoses and accessories to the larger of the two holes on the front of the workVAC.

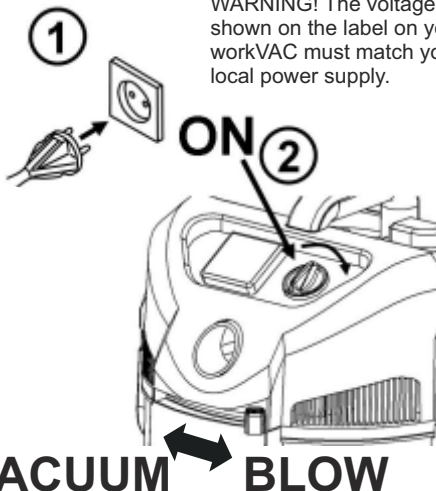
Setting the Blow function

Before using the blow function ensure the bin is empty and free of loose debris and the filter has been cleaned.

Slide the lever all the way to the right hand side.

Connect hoses and accessories to the smaller hole on the upper part of the workVAC.

Using a smaller nozzle such as the Crevice tool will provide a faster airflow.



Rating Label:

WARNING! The voltage shown on the label on your workVAC must match your local power supply.



Starting the workVAC

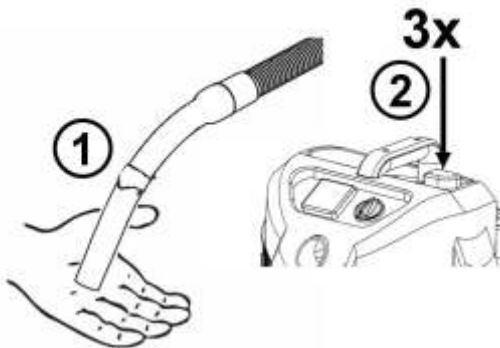
1. Check the voltage rating on your product and connect to a safe and suitable power outlet.
2. Turn the ON/OFF switch clockwise for normal operation or anti-clockwise for automatic start controlled by a POWERtool fitted to the socket.

Cleaning the filter

If the suction performance drops:

1. Switch on the vacuum cleaner
2. Close the nozzle or suction hose opening with the palm of your hand.
3. Press the Filter Cleaning Button three times to start filter cleaning.

The resulting stream of air removes attached dust from the slats of the filter elements.

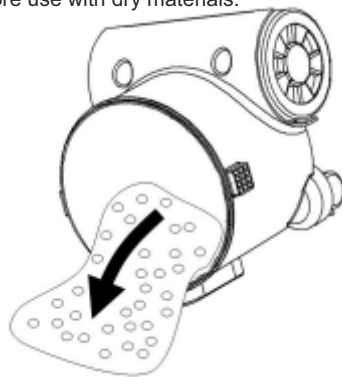
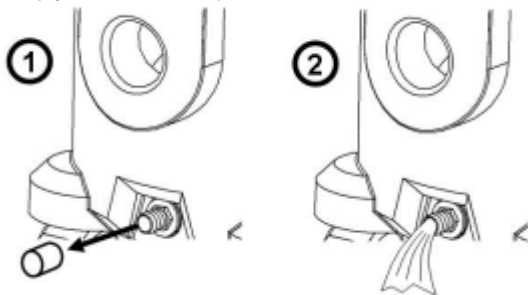


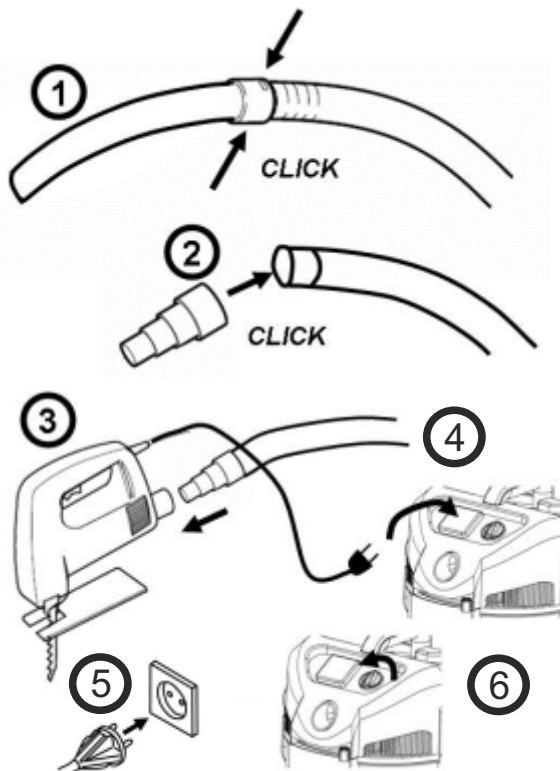
Picking Up Liquids

1. Clean the filter and empty all dirt and debris from the waste bin to prevent mixture with liquids and clogging of the filter.
2. Connect an appropriate attachment to the large Suction Inlet hole.
3. Connect a drainage hose to the Drainage nipple for higher volume cleanup.
3. Start the workVAC and begin the task.
4. Empty often to avoid spills.

WARNING! Check regularly for foam developing in the waste bin or liquid leaking from the lid, empty immediately.

CAUTION! To prevent damage, a wet filter must be dried completely before use with dry materials.





Using the Automatic start function

WARNING! Before using this feature check that the maximum wattage of the appliance to be inserted does not exceed the maximum output of the socket on the workVAC, check rating plates on both appliances.

CAUTION! Always use a high quality circuit breaker with power tools. Fully unwind all cables to prevent heat buildup within the coils.

Before plugging an appliance into the vacuum cleaner socket, switch off the vacuum cleaner and switch off the appliance to be connected.

Follow the operating instructions and safety instructions for any appliance connected to the power tool socket.

Be prepared for a shift in the balance of the tool and the potential for snagging of the hose.

Only use a plug that is designed for the socket on the workVAC.

Never use the workVAC when on a ladder.

Follow all other instructions in all documentation and labelling.

1. Remove the Handle from the Hose.

2. Fit the power tool adaptor,

3. Fit this adaptor to the power tool.

4. Connect the power tool plug to the outlet on the workVAC

5. Plug the workVAC into a safe and suitable power outlet and switch on.

6. Turn the ON/OFF switch anti-clockwise to the AUTO position.

7. Activate the power switch on the attached appliance. A few seconds later the workVAC will automatically start.

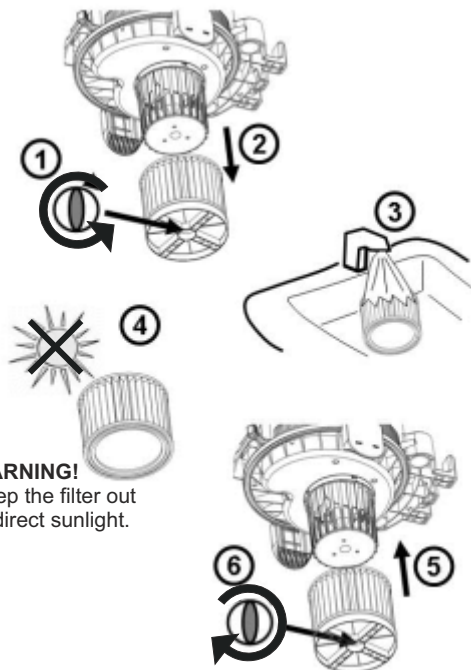
NOTE. The AUTO function operates by sensing a change in the current load. A very low wattage appliance may not trigger the AUTO function.

WARNING! Switch off and remove the battery before carrying out any maintenance on the tool.

Cleaning the Filter

1. Remove the locking screw.
2. Slide the filter away from the fan inlet.
3. Tap to remove dust and loose materials. If the filter is causing reduced suction wash in clean water.
4. Dry evenly and thoroughly on a clean, flat surface.
5. Carefully fit the dry filter back onto the fan inlet.
6. Fit and tighten the locking screw.

WARNING! Keep the filter out of direct sunlight.



WARNING!

Keep the filter out of direct sunlight.

General inspection

Regularly check that all the fixing screws are present and tight. They may vibrate loose over time. Keep the tool's air vents unclogged and clean at all times.

Remove dust and dirt regularly.

Cleaning is best done with compressed air or a rag.

CAUTION! Do not use cleaning agents to clean the plastic parts of the tool. A mild detergent on a damp cloth is recommended. Water must never come into contact with the upper part of the workVAC.

After each use, carefully clean the vacuum with a brush or rag.

Clear any debris from around the moving parts and clips.

Wipe the edge of the waste bin and the rim of the fan unit where it meets the waste bin to ensure a good seal.

Lubrication

No Lubrication is necessary, the bearing area is sealed.

Environment

When the time comes to dispose of this product please consider the environment and take it to a recognised recycling facility instead of disposing with general household waste.

Call your local council, civic amenity site, or recycling centre for information on the recycling and disposal of electrical products and batteries.

Storage

Store the tool, instruction manual and accessories in a secure, dry place. In this way you will always have all the information and parts ready to hand.

The workVAC should ideally be stored between 10°C and 24°C (50°F) and (75°F).

More information

www.cel-global.com or from your supplier.

All electrical parts should be regularly serviced by an approved engineer.

Technical Specifications

9.0

workVAC	- Wet and Dry Vacuum/Blower
Motor Nom/Max	- 1200/1400W
Tank Capacity	- 30L
Filter	- HEPA
Vacuum	- 180-200mbar
Maximum Airflow	- 60m³/min
Hose Inside Diameter	- 32mm (workVAC can accept 50mm)
Operating Voltage	- See Product Rating Plate
workVAC Dimensions	- 480x350x670mm approx (19x13x27")
workVAC Weight	- 7.8Kg (17.2lbs)
Product Code	- WV1

If you experience any problems with the product please contact

email: service@cel-global.com

phone UK: +44 8453 88 97 69

phone US: +1 800 233 7592

www.cel-global.com



**GENERAL HAZARD
SAFETY ALERT**



**BEWARE OF FLYING
OBJECTS AND DEBRIS**



READ INSTRUCTION MANUAL



KEEP BYSTANDERS AWAY

CEL
C Enterprise Ltd

C Enterprise Limited www.cel-global.com info@cel-global.com

UK • HK • USA • China • Europe • Australia • Japan

© Copyright C Enterprise Limited 2011

Manual version 110711 Designed and Edited in the UK, Made and Printed in China